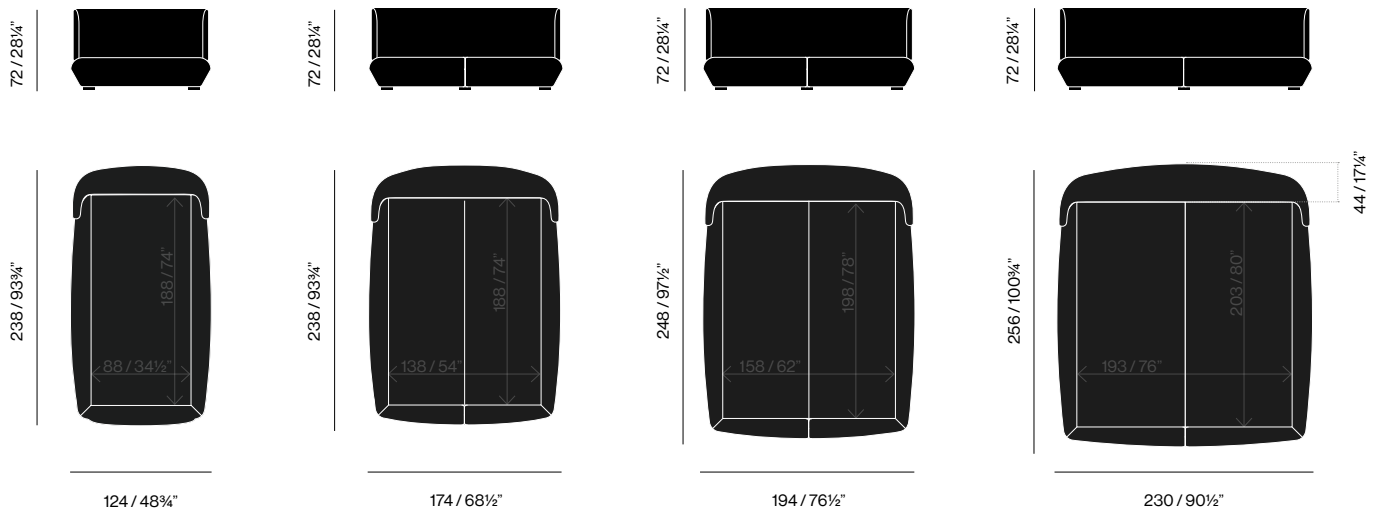




WENTZ  
BAIXA  
BED



## Baixa Bed, 2021

Baixa ("low" in Portuguese) is the first WENTZ bed and translates the designer's intent to invite people to lay close to the floor. The curved and upholstered structure breaks the rigid lines of the mattress and invite to relaxation. The exclusive WE—KNIT® covering — made from recycled PET bottles — provides a soft touch on a seamless surface.

PRODUCT TYPE: Bed

ENVIRONMENT: Indoor

MATERIALS: Wood, Upholstery

### DIMENSIONS

SINGLE (BX34) — MATTRESS: 88 x 188CM / 34 1/2" x 74"

W: 124cm / 48 3/4"

D: 238cm / 93 3/4"

H: 72cm / 28 1/4"

DOUBLE (BX31) — MATTRESS: 138 x 188CM / 54" x 74"

W: 174cm / 68 1/2"

D: 238cm / 93 3/4"

H: 72cm / 28 1/4"

QUEEN (BX32) — MATTRESS: 158 x 198CM / 62" x 78"

W: 194cm / 76 1/2"

D: 248cm / 97 1/2"

H: 72cm / 28 1/4"

KING (BX33) — MATTRESS: 193 x 203CM / 76" x 80"

W: 230cm / 90 1/2"

D: 256cm / 100 3/4"

H: 72cm / 28 1/4"

### COLORS

See below exclusive WE—KNIT® coverings for WENTZ upholstered products.

### TECHNICAL DESCRIPTION

Upholstered bed with solid wood and plywood structure, elastic straps and foam. Exclusive WE—KNIT® covering. Base in black painted wood. Base divided in two halves (except for the single size) for easier transportation.

### CERTIFICATES

US California Tech. Bull. 117

### PACKAGING / GROSS WEIGHT

SINGLE (BX34) — 2 VOLUMES

VOL 1: 130x70x50cm / 51" x 28" x 20"

VOL 2: 130x245x35cm / 51" x 96" x 14"

54kg / 119 lbs

DOUBLE (BX31) — 2 VOLUMES

VOL 1: 180x70x50cm / 71" x 28" x 20"

VOL 2: 95x245x35cm / 37" x 96" x 14"

VOL 3: 95x245x35cm / 37" x 96" x 14"

76kg / 168 lbs

QUEEN (BX32) — 2 VOLUMES

VOL 1: 200x70x50cm / 79" x 28" x 20"

VOL 2: 100x270x35cm / 39" x 106" x 14"

VOL 3: 100x270x35cm / 39" x 106" x 14"

88kg / 194 lbs

KING (BX33) — 3 VOLUMES

VOL 1: 235x70x50cm / 93" x 28" x 20"

VOL 2: 120x260x35cm / 47" x 102" x 14"

VOL 3: 120x260x35cm / 47" x 102" x 14"

106kg / 234 lbs

MODELS / SIZES

---



BX34  
BAIXA BED – SINGLE



BX31  
BAIXA BED – DOUBLE

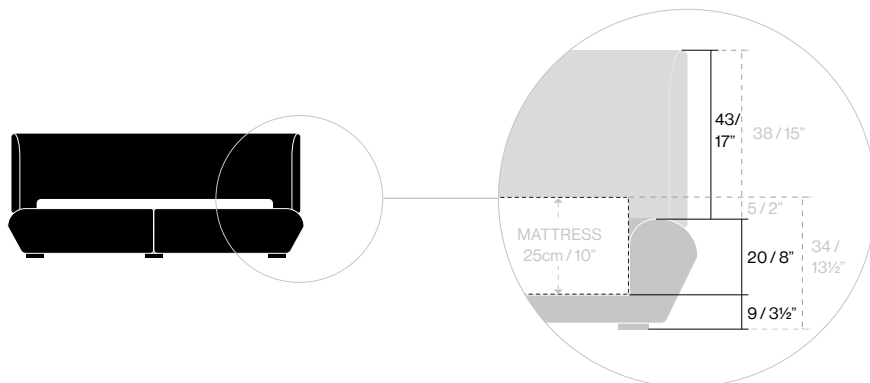


BX32  
BAIXA BED – QUEEN



BX33  
BAIXA BED – KING

## MATTRESS HEIGHT



The height varies depending on the mattress used. Please consider that the mattress will be elevated 9cm / 3½" from the floor. (In the drawing and photos: mattress 25cm / 10" high, resulting in a total height of 34cm / 13½").

We recommend using a mattress of up to 35cm / 14" to maintain the usable area of the backrest.

NOTE: Mattress not included.

## LIFT LEGS



The Baixa Bed standard legs can be replaced with the "lift legs" to raise the total height by 5cm / 2 inches and consequently lift your mattress.

NOTE  
Baixo Lift Legs sold separately.

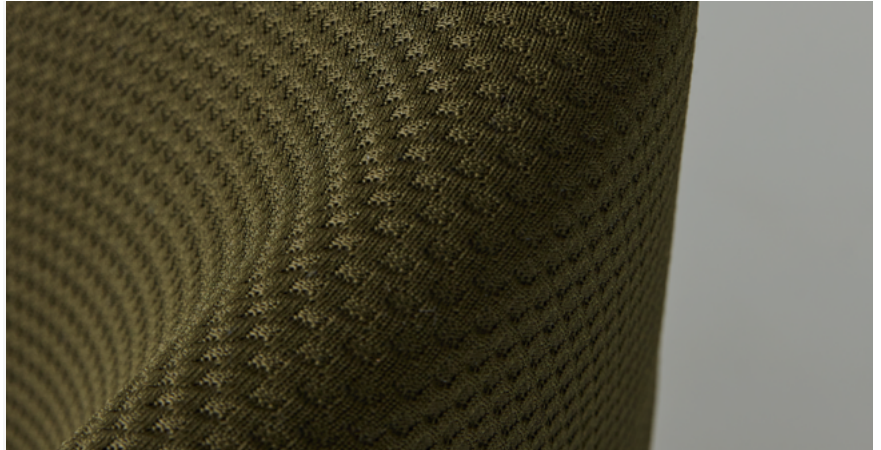
WE—KNIT® 001

COMPOSITION  
100% Recycled PET

ABRASION RESISTANCE  
100.000 Martindale  
Mesh wire pulling: 5 (ISO 1–5)  
Colorfastness: 5 (ISO 1–5)

LIGHT RESISTANCE  
Lightfastness: 5 (ISO 1–5)

FLAME RESISTANCE  
US California Tech. Bull. 117



001.02  
OFF-WHITE



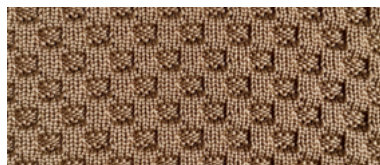
001.10  
MOSS GREEN



001.03  
SAND



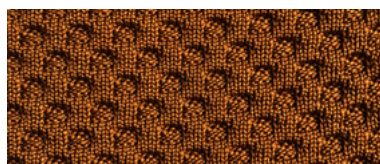
001.13  
COOL GREEN



001.05  
CHESTNUT



001.12  
LIGHT BLUE



001.07  
CLAY



001.11  
NAVY BLUE



001.18  
OFF BLACK

WE—KNIT® 005

COMPOSITION

70% Recycled PET + 30% Elastane

ABRASION RESISTANCE

100.000 Martindale

Mesh wire pulling: 4 (ISO 1–5)

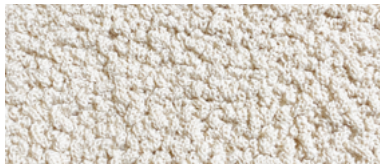
Colorfastness: 5 (ISO 1–5)

LIGHT RESISTANCE

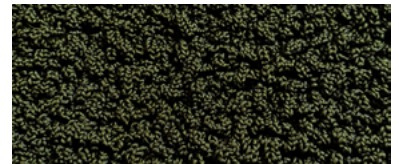
Lightfastness: 5 (ISO 1–5)

FLAME RESISTANCE

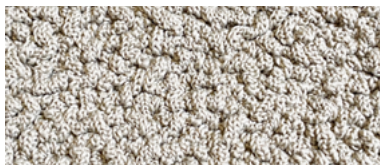
US California Tech. Bull. 117



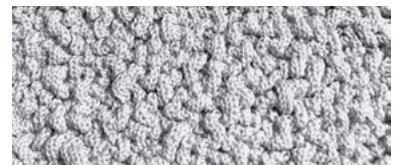
005.02  
OFF-WHITE



005.10  
MOSS GREEN



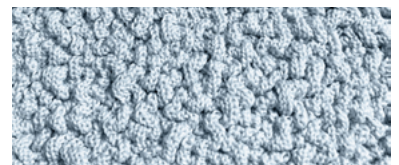
005.03  
SAND



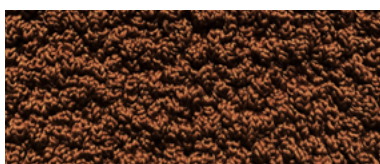
005.13  
COOL GREY



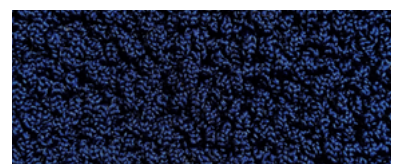
005.05  
CHESTNUT



005.12  
LIGHT BLUE



005.07  
CLAY



005.11  
NAVY BLUE



005.18  
OFF-BLACK