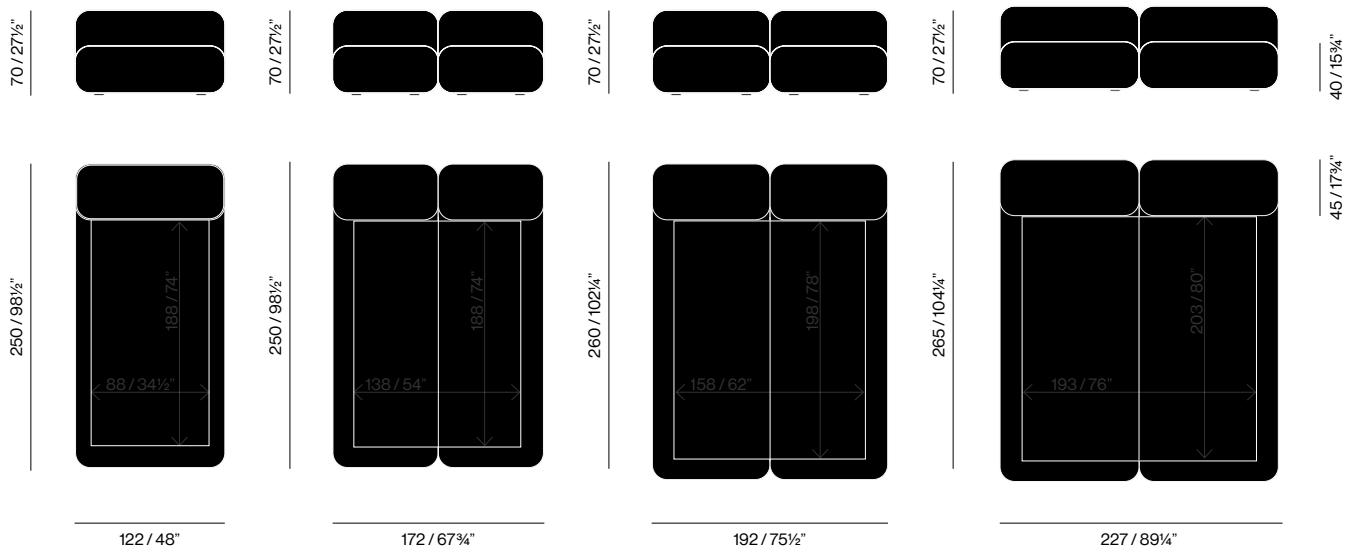




WENTZ
DOBRA
BED



Dobra Bed, 2021

Dobra ("Fold" in Portuguese) was created from a natural gesture: the folding of a soft material. In each piece, a strength that respects the foam's density is applied. It's as if a big cushion was curved and paused in time. This way, the piece, a frozen arc movement, sustains its possible return to the original position. The original WE—KNIT® covering — made from recycled PET bottles — combines a tactile experience, with high resistance and sustainability.

PRODUCT TYPE: Bed

ENVIRONMENT: Indoor

MATERIALS: Wood, Upholstery

DIMENSIONS / NET WEIGHT

SINGLE (DB24) — MATTRESS: 88 x 188CM / 34½" x 74"

W: 122cm / 48"
D: 250cm / 98½"
H: 70cm / 27½"
71 kg / 156 lbs

DOUBLE (DB21) — MATTRESS: 138 x 188CM / 54" x 74"

W: 172cm / 67¾"
D: 250cm / 98½"
H: 70cm / 27½"
99 kg / 218 lbs

QUEEN (DB22) — MATTRESS: 158 x 198CM / 62" x 78"

W: 192cm / 75½"
D: 260cm / 102¼"
H: 70cm / 27½"
110 kg / 242 lbs

KING (DB23) — MATTRESS: 193 x 203CM / 76" x 80"

W: 227cm / 89¼"
D: 265cm / 104¼"
H: 70cm / 27½"
138 kg / 304 lbs

COLORS

See below exclusive WE—KNIT® coverings for WENTZ upholstered products.

TECHNICAL DESCRIPTION

Upholstered bed with wood structure, hypersoft foam and WE—KNIT® covering. Base in black painted wood. The Double, Queen and King versions are unassembled in two parts for easier shipping and handling.

CERTIFICATES

US California Tech. Bull. 117

PACKAGING / GROSS WEIGHT

SINGLE (DB24)

127x255x80cm / 50" x 100" x 31"
148 kg / 326 lbs

DOUBLE (DB21) — 2 VOLUMES

VOL 1: 90x255x80cm / 35" x 100" x 31"
VOL 2: 90x255x80cm / 35" x 100" x 31"
184 kg / 405 lbs

QUEEN (DB22) — 2 VOLUMES

VOL 1: 100x265x80cm / 39" x 104" x 31"
VOL 2: 100x265x80cm / 39" x 104" x 31"
195 kg / 430 lbs

KING (DB23) — 2 VOLUMES

VOL 1: 120x270x80cm / 47" x 106" x 31"
VOL 2: 120x270x80cm / 47" x 106" x 31"
233 kg / 514 lbs

SIZES



DB24
DOBRA BED — SINGLE



DB21
DOBRA BED — DOUBLE

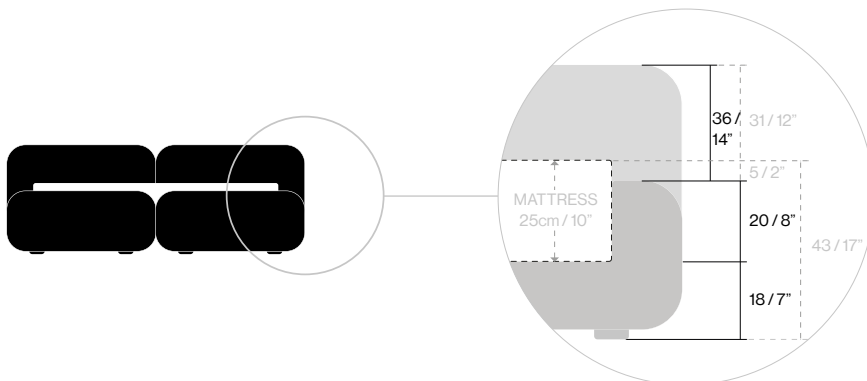


DB22
DOBRA BED — QUEEN



DB23
DOBRA BED — KING

MATTRESS HEIGHT



The height varies depending on the mattress used. Please consider that the mattress will be elevated 18cm / 7" from the floor. (In the drawing and photos: mattress 25cm / 10" high, resulting in a total height of 43cm / 17").

NOTE: Mattress not included.

WE—KNIT® 002

COMPOSITION

70% Recycled PET + 30% Elastane

ABRASION RESISTANCE

100.000 Martindale

Mesh wire pulling: 5 (ISO 1–5)

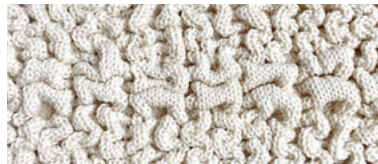
Colorfastness: 5 (ISO 1–5)

LIGHT RESISTANCE

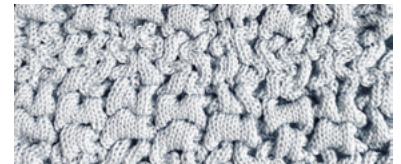
Lightfastness: 5 (ISO 1–5)

FLAME RESISTANCE

US California Tech. Bull. 117



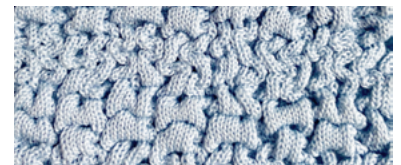
002.02
OFF-WHITE



002.13
COOL GREY



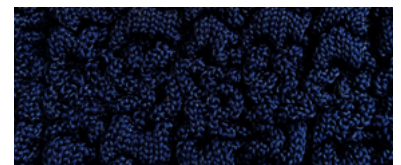
002.03
SAND



002.12
LIGHT BLUE



002.05
CHESTNUT



002.11
NAVY BLUE



002.07
CLAY



002.18
OFF BLACK

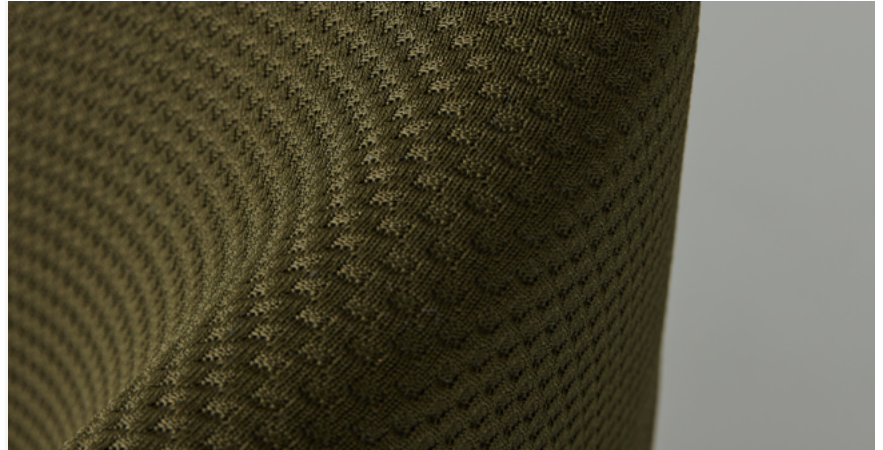
WE—KNIT® 001

COMPOSITION
100% Recycled PET

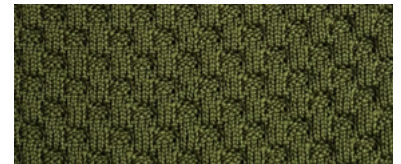
ABRASION RESISTANCE
100.000 Martindale
Mesh wire pulling: 5 (ISO 1–5)
Colorfastness: 5 (ISO 1–5)

LIGHT RESISTANCE
Lightfastness: 5 (ISO 1–5)

FLAME RESISTANCE
US California Tech. Bull. 117



001.02
OFF-WHITE



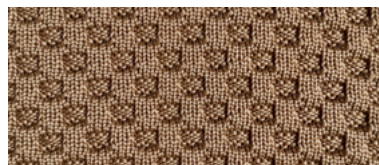
001.10
MOSS GREEN



001.03
SAND



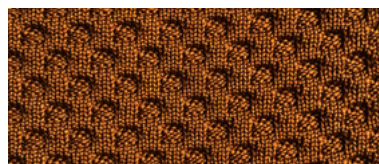
001.13
COOL GREEN



001.05
CHESTNUT



001.12
LIGHT BLUE



001.07
CLAY



001.11
NAVY BLUE



001.18
OFF BLACK

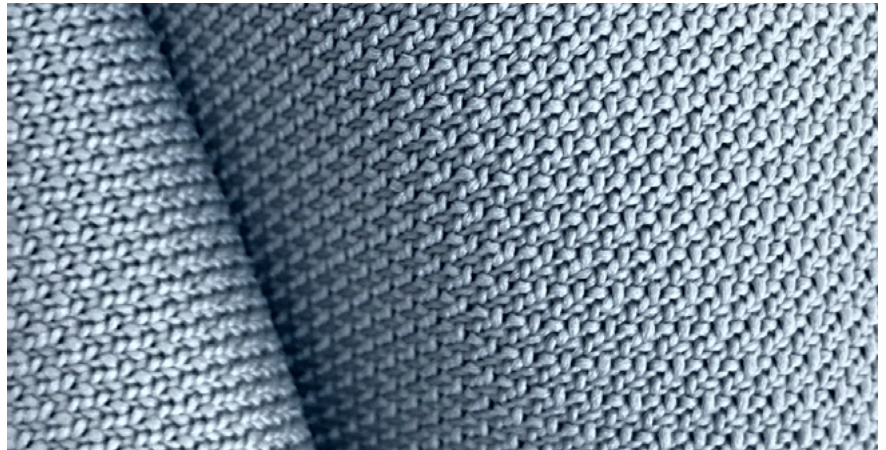
WE—KNIT® 003

COMPOSITION
100% Recycled PET

ABRASION RESISTANCE
100.000 Martindale
Mesh wire pulling: 4 (ISO 1–5)
Colorfastness: 5 (ISO 1–5)

LIGHT RESISTANCE
Lightfastness: 5 (ISO 1–5)

FLAME RESISTANCE
US California Tech. Bull. 117



003.02
OFF-WHITE



003.10
MOSS GREEN



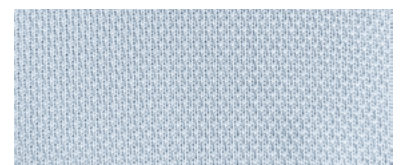
003.03
SAND



003.13
COOL GREY



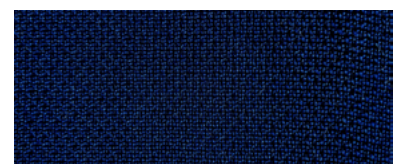
003.05
CHESTNUT



003.12
LIGHT BLUE



003.07
CLAY



003.11
NAVY BLUE



003.18
OFF BLACK

WE—KNIT® 004

COMPOSITION
100% Recycled PET

ABRASION RESISTANCE
100.000 Martindale
Mesh wire pulling: 4 (ISO 1–5)
Colorfastness: 5 (ISO 1–5)

LIGHT RESISTANCE
Lightfastness: 5 (ISO 1–5)

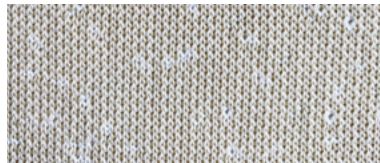
FLAME RESISTANCE
US California Tech. Bull. 117



004.02
JACQUARD OFF WHITE



004.01
JACQUARD WHITE



004.03
JACQUARD SAND



004.04
JACQUARD GREY



004.05
JACQUARD CHESTNUT



004.10
JACQUARD MOSS GREEN



004.07
JACQUARD CLAY



004.11
JACQUARD NAVY BLUE



004.18
JACQUARD OFF BLACK

WE—KNIT® 005

COMPOSITION

70% Recycled PET + 30% Elastane

ABRASION RESISTANCE

100.000 Martindale

Mesh wire pulling: 4 (ISO 1–5)

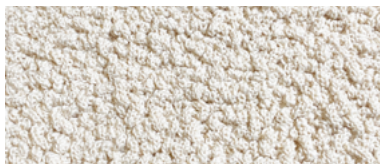
Colorfastness: 5 (ISO 1–5)

LIGHT RESISTANCE

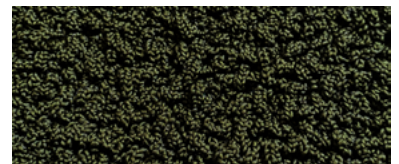
Lightfastness: 5 (ISO 1–5)

FLAME RESISTANCE

US California Tech. Bull. 117



005.02
OFF-WHITE



005.10
MOSS GREEN



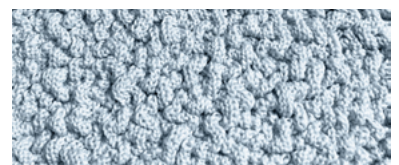
005.03
SAND



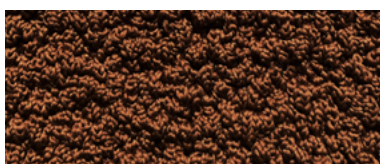
005.13
COOL GREY



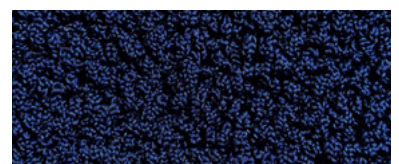
005.05
CHESTNUT



005.12
LIGHT BLUE



005.07
CLAY



005.11
NAVY BLUE



005.18
OFF-BLACK