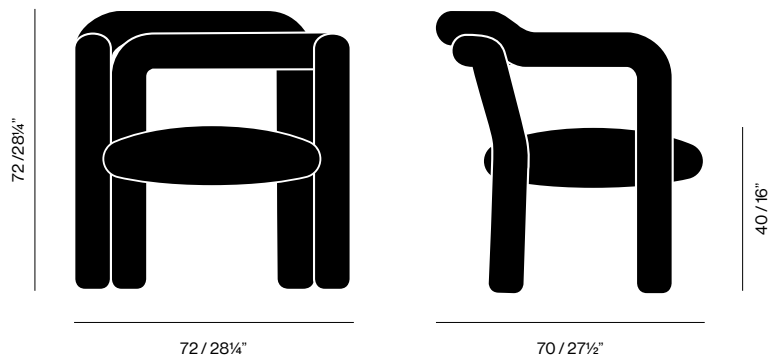


WENTZ
TUBO
LOUNGE CHAIR





Tubo Lounge Chair, 2023

The latest version of the Tubo Series proposes a more casual and soft seating for lounges, in a new proportion with generous foam tubes and the new WE—KNIT® covering — exclusive WENTZ technology that allows three-dimensional surfaces without seams — which combines recycled PET with natural wool. In a sensorial and fluid path, the tube materializes a long and sinuous design that runs through the parts of the chair in a single breath, like a vegetable that grows intentionally and essentially in search of its function.

CATEGORY: Lounge Chair

ENVIRONMENT: Indoor

MATERIALS: Steel, Upholstery

DIMENSIONS

W: 72cm / 28 1/4"

D: 70cm / 27 1/2"

H: 72cm / 28 1/4"

Seat height: 40cm / 16"

NET WEIGHT

15,4kg / 34 lbs

COLORS

See below exclusive WE—KNIT® coverings for WENTZ upholstered products.

CERTIFICATES

US California Tech. Bull. 117

TECHNICAL DESCRIPTION

Upholstered chair with steel structure and foam. Exclusive WE—KNIT® covering made in a tubular shape, making it seamless. Plastic tips fitted to the feet to prevent fabric friction against the floor.

PACKAGING

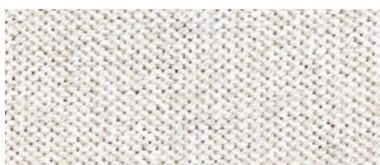
80 x 80 x 80cm / 31" x 31" x 31"

GROSS WEIGHT

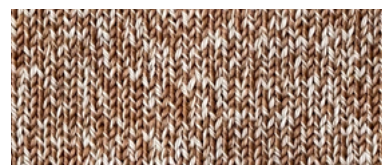
18kg / 40 lbs

WE—KNIT® TUBO WOOL

COMPOSITION
50% Wool
50% Recycled PET



L01
WHITE



L05
CHESTNUT



L18
OFF-BLACK

WE—KNIT® TUBO

COMPOSITION
100% Recycled PET

ABRASION RESISTANCE
100.000 Martindale
Mesh wire pulling: 4 (ISO 1–5)
Colorfastness: 5 (ISO 1–5)

LIGHT RESISTANCE
Lightfastness: 5 (ISO 1–5)

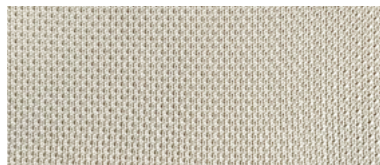
FLAME RESISTANCE
US California Tech. Bull. 117



02
OFF-WHITE



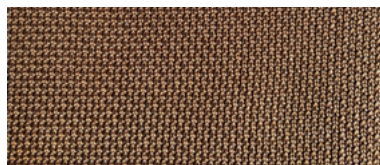
10
MOSS GREEN



03
SAND



13
COOL GREY



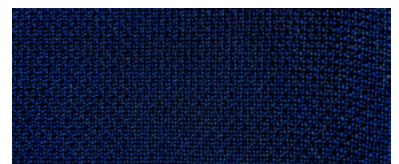
05
CHESTNUT



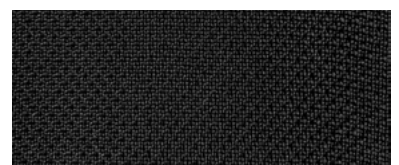
12
LIGHT BLUE



07
CLAY



11
NAVY BLUE



18
OFF-BLACK